

The Midland Trail has always been a road that went somewhere. Since its beginnings, it has been a great American road that led to dreams, schemes and plans that changed lives and made American history. In that great tradition and spirit, we look forward to moving this plan and our Association ahead.

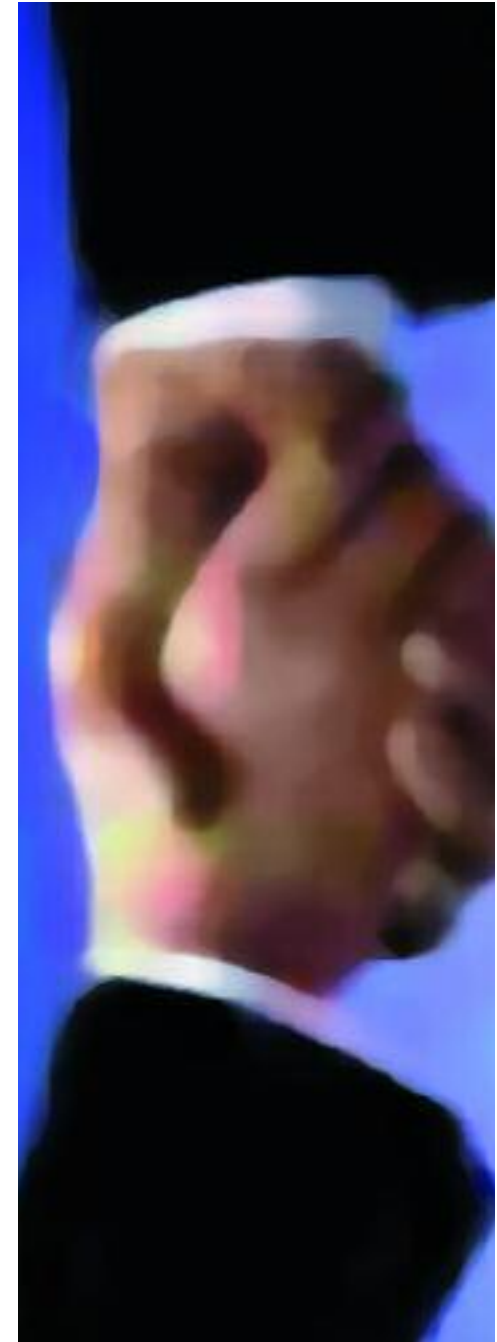
Development of sustainable economic entities along the Midland Trail continues to provide tremendous economic and social benefits to the Midland Trail region and to West Virginia. The challenge to be imaginative, to take risks, and to create new projects on a continuing basis characterizes the American spirit and the Midland Trail itself. To this driving personality we add a strong commitment to preservation and to protection of our intrinsic qualities, solid management and relentless marketing.

These characteristics are visible in the internationally-known whitewater recreational industry. Lewisburg and White Sulphur Springs in Greenbrier County on the eastern end offer a national rural model for preservation and culture. On our western end, an unprecedented collaborative partnership exists between the Trail Association and the chemical, coal, metal, and river industries. All along the Trail, the cultural diversity of our African, Native American and European histories illumi-

nates the “melting pot” nature of the Trail and our nation over the last two centuries.

Our time as a community group in developing this plan and growing our organization with events like our 15th Anniversary, The Harley Davidson Poker Run and the publication of three MT Destination Guides, and the DayTripper offers important experiences and benefits to our Association and our partners along the Byway.

We designed this plan to be both practical as well as visionary. We intend for it to be a multi-purpose document which can be revised and updated as needed. We appreciate the support of the U.S. Department of Transportation, the West Virginia Department of Transportation, WV Division of Tourism, the WV Office of the Governor and the community volunteers and partners who have been integral to this process.



11.1 Collaboration and Partners

Our Partners in Planning and Achieving!

11.2

Wayne - Cabell – Counties-

Kenova- Ceredo

City of Kenova
Pumpkin Heritage Festival
Griffith & Feil Pharmacy
The Collis P. Huntington
Railroad Historical Society
Town of Ceredo
Beechfork State Park

Huntington-

Buck's Fruit Company
Buddy's BBQ
BMW's
Cabell County Fair
Cabell County Library
Calamity Café
Camden Park
Central City Market
Design by Bowen
Heritage Farm Museum & Village
Huntington CVB
Huntington Quarterly
Huntington Works! Committee
Lavalette Nursery
Museum of Radio & Technology
Old Central City
Subway

Barboursville-

City of Barboursville
Best Western
Huntington Mall
Bob Evans
The Huntington Mall
Outback Steakhouse
Route 60 Music
Sunbeam House

Milton-

Blenko Glass
Country Framer
Dairy Queen
Town of Milton
Morris Watch Shop
Union Baptist Church
Yesterday's Memories
Subway

Putnam County-

Glass Amulet/CoffeeConnection
Main Street Studio
Hurricane CVB
Dale Morton Studios
IKON
Ms. Phyllis' Sports Bar
Putnam County CVB
Quilts by Phyllis
Root Cellar Herbs and Ferguson
Tea Room
Unique Boutique
Wellington's

Whispering Wisteria

Nitro- Institute- Dunbar Loop-

Antiques on the Avenue
City of Nitro
Somewhere in Time
Terradon Communications
West Virginia Trails Coalition
West Virginia State University
Booker T. Washington Institute
City of Dunbar
Huck Finn's Restaurant
Travelodge – Charleston/Dunbar
Tri-State Race Track & Gaming
Sleep Inn

St. Albans-

Amy Whittington Designs
El Rancho Inn
Fret'N Fiddle
River's Edge Cafe
City of St. Albans
St. Albans' Historical Council

South Charleston-

DOW Chemical
Harley-Davidson of WV
House of Dimitri II
Komax Copiers
Lamp & Shade Studio
Longhorn Steakhouse
Microtel Inn
Precision Tune
Ramada Charleston
South Charleston CVB
Sugarbaskets
TGI Friday's
Wingate Inn

Charleston-

405 Capitol Street
Aladdin's Restaurant
Bank One
Cassis Holistic Care
Charleston Marriott
Charleston Parks & Recreation
Charleston School of Beauty
Chris' Hotdogs
Clay Center for the
Arts & Sciences
Craik-Patton House
Culinart at the Clay Center
Distinctive Gourmet
Donut Connection
Ellen's Homemade Ice Cream
Firefly Imaging
First Watch
Holiday Inn/
Chesapeake Crab House
Holiday Inn Express CivicCenter
Ivor's Trunk

Koenig Art Emporium
Neu Aesthetic Skin Care Clinic
New River Campground
P. A. Denny
Paranzino's
St. Anthony's Catholic School
Steve Payne Gallery
Taylor Books
The Annex Gallery
The Dresser
The Brass Pineapple
The Charleston Civic Center
The Roger Lucas Gallery
The Scottish Rite
Mykonos Restaurant
Trivillian's Pharmacy
University of Charleston
Virginia's Chapel
Vision's Day Spa
WV Symphony
West Virginia Lottery
Yeager Airport
WV Culture & History
Young's Floral Co.

Chesapeake-

Town of Chesapeake
Chesapeake VFD

Malden- Belle- Quincy-

Cabin Creek Quilts
Larry L. Rowe
DuPont Chemical
Old Stone House
Quincy Mall
Walker Machinery

Cedar Grove- Glasgow-

Virginia's Chapel
Town of Glasgow

Fayette – Nicholas – Raleigh Counties

Smithers - Alloy- Glen Ferris-

Market Express
Town of Smithers
Wee Rabbit Gift Shop
Elkem Metals
Glen Ferris Inn
Sticks and Stones

Gauley Bridge-

Evan Scent Candles & Gifts
Gauley Bridge Tepees
Town of Gauley Bridge
New River Campground

Ansted Area-

Ansted Floral & Gifts
African-American Family Tree
Museum
Ansted Dairy Queen
Town of Ansted
Blue Smoke Salsa

Contentment Museum Complex
Dairy Queen
Fetty's Country Store
Hawks Nest State Park
L&S Designs
Midland Trail Motel
Mountain Cove Country Store
Mountain Memories Cabins
Mystery Hole
New River Exxon
New River Jet Boats
Subway & Shell

Hico-

Adventure Mountain Rivers
Country Road Cabins
Mountain River Tours
North American River Runners

Summersville-

Good Evening Ranch & Feedbox
Hardman's Hardware
Long Point Cabin
Summersville CVB

Fayetteville- Oak Hill Area-

Comfort Inn/New River
Passages to Adventure
White Horse Inn
Robin's Nest
ACE Adventure
Hidden Cottage
New River NEO-Tropical Festival
New River CVB
Opossum Creek Retreat
Songer Whitewater
Class VI River Runners
Smokey's on the Gorge
US National Park Service
Quality Inn

Beckley-

Colgan Air
Cracker Barrel
Daniel Vineyards
Glade Springs Resort
Southern West Virginia CVB
Tamarack

Clifftop-

Babcock State Park
Camp Washington-Carver

Greenbrier County-

Rainelle-

Town of Rainelle
Meadow River Festival

Lewisburg-

1785 Restaurant
Carnegie Hall
Cooper Gallery
Day's Inn
EcoTheater
Food & Friends

General Lewis Inn
Great Oak Bed and Breakfast
Greenbrier County CVB
Greenbrier Valley Airport
Greenbrier Valley Theatre
Rose Summers Greenway Realty
Lee Street Inn
Lewisburg Floral
Lost World Caverns
North House Museum
Wisteria Bed and Breakfast
Patchwork Films
Peddler's Alley Antiques
Robert's Antiques
Stone Hill Realty
Wolf Creek Gallery

White Sulphur Springs-

James Wylie House
Kitten's Korner
Lillian's Antique Shop/B&B
Oakhurst Links
Open Book
Route 60 American Grill
Village of White SulphurSprings

Ronceverte-

Harvest Grille
Historic Organ Cave
Ronceverte River Festival
Rudy's Corner Grill
Town of Ronceverte

Summers County & side trips south-

Pence Springs- Talcott – Hinton

Pence Springs Resort
Thimble & Plow
John Henry Festival
Dillon's Superette
Talcott Station
Cantrell Ultimate Rafting

Pocahontas County

The Current Bed & Breakfast
Brazen Head Inn

Statewide-

American Travel Center
New River Train
US & WV DOT
US Fish and Wildlife
WV DOH NSB Programs
Shoney's
Tudor's Biscuit World
Gino's Pizza
U. S. Airways
Office of the Governor of WV
WV Division of Tourism
WV DNR – Wildlife Division
WV Culture & History
WV State Parks & Forests
WV Public Broadcasting


[Charleston CVB](#)
[New River CVB](#)
[Ginos](#)
[Greenbrier/Lewisburg CVB](#)
[Harley-Davidson of WV South Charleston & Hico](#)

[Email this Page](#)

[Printer Friendly](#)

SPECIAL THANKS

TO OUR SUPPORTERS & ADVERTISERS

Wayne - Cabell - Counties-

Kenova- Ceredo-Wayne

City of Kenova
Pumpkin Heritage Festival
Griffith & Feil Pharmacy
The Collis P. Huntington Railroad
Historical Society
Town of Ceredo
Beechfork State Park

Huntington-

Buck's Fruit Company
Cabell County Fair
Cabell County Library

Camden Park
Central City Market
Design by Bowen
Heritage Farm Museum & Village
Huntington CVB
Huntington Quarterly
Huntington Works! Committee
Lavalette Nursery
Museum of Radio and Technology
Old Central City
Subway

Barboursville-

City of Barboursville
Best Western
Huntington Mall
Bob Evans
The Huntington Mall
Outback Steakhouse
Route 60 Music
Sunbeam House

Milton-

Blenko Glass
Country Framer
Dairy Queen
Town of Milton
Morris Watch Shop
Union Baptist Church
Yesterday's Memories
Subway

Putnam County-

Glass Amulet/Coffee Connection
Main Street Studio
Hurricane CVB
Dale Morton Studios
IKON
Ms. Phyllis' Sports Bar

Charleston-

405 Capitol Street
Aladdin's Restaurant
Bank One
Cassis Holistic Care
Charleston Marriott
Charleston Parks &
Recreation
Charleston School of Beauty
Chris' Hotdogs
Culture
Clay Center for the
Arts & Sciences
Capitol Complex
Capitol Street
Craik-Patton House
Culinart at the Clay Center
Distinctive Gourmet
Donut Connection
Ellen's Homemade Ice Cream

Firefly Imaging

First Watch
Holiday Inn Charleston House
Holiday Inn Express Civic Center
Ivor's Trunk
Jackson's
Koenig Art Emporium
Neu Aesthetic Skin Care Clinic
New River Campground
Mulligan's
P. A. Denny
Paranzino's
St. Anthony's Catholic School
Steve Payne Gallery
Taylor Books
The Annex Gallery
The Dresser
The Brass Pineapple
The Charleston Civic Center
The Roger Lucas Gallery
The Scottish Rite
Mykonos Restaurant
Trivillian's Pharmacy
University of Charleston
Virginia's Chapel
Vision's Day Spa
Walker Machinery
WV PBS

Fayetteville- Oak Hill Area-

Comfort Inn/New River
Four Columns Inn
Passages to Adventure
White Horse Inn
Robin's Nest
ACE Adventure
Hidden Cottage
New River NEO-Tropical Festival
New River CVB
Opossum Creek Retreat
Songer Whitewater
Class VI River Runners/Smokey's on the
Gorge
US National Park Service
Quality Inn

Beckley-

Colgan Air
Cracker Barrel
Daniel Vineyards
Glade Springs Resort
Southern West Virginia CVB
Tamarack

Clifftop-

Babcock State Park
Camp Washington-Carver

Greenbrier County-

Rainelle-

Town of Rainelle
Meadow River Festival
New River Exxon

Lewisburg-

1785 Restaurant
Carnegie Hall
Cooper Gallery
Day's Inn
EcoTheater
Food & Friends
General Lewis Inn
Great Oak Bed and Breakfast

Putnam County CVB
Quilts by Phyllis
Root Cellar Herbs and Ferguson Tea Room
Unique Boutique
Wellington's
Whispering Wisteria

Nitro- Institute- Dunbar Loop-

Antiques on the Avenue
City of Nitro
Gino's Pizza & Spaghetti
Somewhere in Time
Terradon Communications
Tudor's Biscuit World
West Virginia Trails Coalition
West Virginia State University
Booker T. Washington Institute
City of Dunbar
Huck Finn's Restaurant
Travelodge – Charleston/Dunbar
BMW's

Kanawha County-

Tri-State Race Track and Gaming
Center
Jerry Adkins Salon
Sleep Inn
Buddy's BBQ

St. Albans-

Amy Whittington Designs
El Rancho Inn
Fret'N Fiddle
River's Edge Cafe
City of St. Albans
St. Albans' Historical Council

South Charleston-

DOW Chemical
Harley-Davidson of WV
House of Dimitri II
Komax Copiers
Lamp & Shade Studio
Longhorn Steakhouse
Microtel Inn
Precision Tune
Ramada Charleston
South Charleston CVB
Sugarbaskets
TGI Friday's
WV Tourism
Wingate Inn

WV Symphony
West Virginia Lottery
Yeager Airport
West Virginia Cultural Center
Young's Floral Co. **Chesapeake-**
Town of Chesapeake
Chesapeake VFD

Malden- Belle- Quincy-
Cabin Creek Quilts

Larry L. Rowe
Malden Antiques
DuPont Chemical
Old Stone House
Quincy Mall

Cedar Grove- Glasgow-
Virginia's Chapel
Town of Glasgow

Fayette – Nicholas – Raleigh Counties-
Smithers - Alloy- Glen Ferris-

Market Express
Town of Smithers
Wee Rabbit Gift Shop
Elkem Metals
Glen Ferris Inn
Sticks and Stones

Gauley Bridge-

Evan Scent Candles & Gifts
Gauley Bridge Tepees
Town of Gauley Bridge
New River Campground

Ansted Area-

African-American Family Tree
Museum
Ansted Dairy Queen
Town of Ansted
Blue Smoke Salsa
Contentment Museum Complex
Dairy Queen
Fetty's Country Store
Hawks Nest State Park
L&S Designs
Midland Trail Motel
Mountain Cove Country Store
Mountain Memories Cabins
Mystery Hole
New River Jet Boats
Subway & Shell
Ansted Floral & Gifts

Hico-

Adventure Mountain Rivers
Country Road Cabins
Mountain River Tours
North American River Runners

Summersville-

Cornerstone Café
Historic Brock house
Good Evening Ranch & Feedbox
Hardman's Hardware
Long Point Cabin
Summersville CVB

Greenbrier County CVB
Greenbrier Valley Airport
Greenbrier Valley Theatre
Rose Summers Greenway Real Estate
Lee Street Inn
Lewisburg Floral
Lost World Caverns
North House Museum
Wisteria Bed and Breakfast
Patchwork Films
Peddlar's Alley Antiques
Robert's Antiques
Stone Hill Realty
Wolf Creek Gallery

White Sulphur Springs-

James Wylie House
Kitten's Korner
Lillian's Antique Shop/B&B
New York Life
North House Museum
Oakhurst Links
Open Book
Route 60 American Grill
Village of White Sulphur Springs

Ronceverte-

Harvest Grille
Organ Cave
Ronceverte River Festival
Rudy's Corner Grill
Town of Ronceverte

Summers County & side trips south-
Pence Springs- Talcott – Hinton Area-

Pence Springs Resort
Thimble & Plow
John Henry Festival
Dillon's Superette
Talcott Station
Cantrell Ultimate Rafting

Pocahontas County & Side Trips North-

The Current Bed & Breakfast
Brazen Head Inn

Statewide-

American Travel Center
New River Train
US & WV DOT
US Fish and Wildlife
NSB Programs
Shoney's
Tudor's Biscuit World
Gino's Pizza
U. S. Airways
Office of the Governor of WV
WV Division of Tourism
WV DNR – Wildlife Division
WV Culture & History
WV State Parks & Forests
WV Public B roadcasting

[Artisans, Artists, Crafters](#)
[Civil War & Living History](#)
[Fishing, Boating, Hunting](#)
[Historical Homes &
Museums](#)
[Rafting, Hiking, Rock
Climbing](#)
[Scenic Vistas, Points of
Interest](#)
[Lodging](#)
[Free Destination Guide](#)
[Welcome to the Association](#)
[Our Projects](#)
[Artist Call](#)
[Interpretive Plan](#)
[Midland Trail Discount Card](#)
[Midland Trail Guide Partners](#)
[Join Us!](#)
[Task Forces](#)
[Midland Trail Mile Marker](#)
[Signage Plan](#)
[Marketing Program](#)
[Association Meetings and
Events](#)
[Harley Davidson Poker Run](#)
[CMP Original 2000](#)
[CMP 2005](#)
[Midland Trail Destination](#)
[Guide Media Kit](#)
[Story Ideas](#)
[Press Releases](#)
[Media Awards](#)
[MT in the News](#)
[MT Day Tripper](#)

